

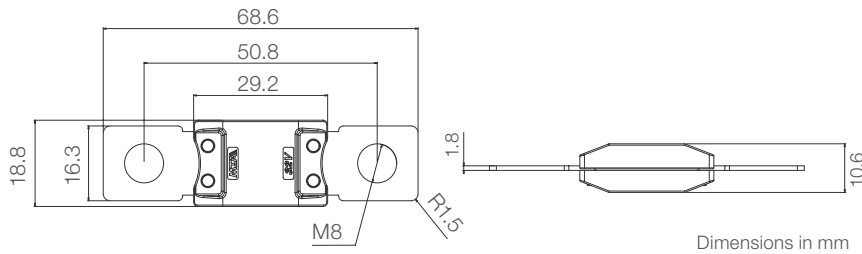
MEGAVAL®



GENERAL DESCRIPTION

| | |
|--------------------------------|----------------------------------------|
| Breaking capacity | 2000 A |
| Voltage rating | 32 V |
| Ambient temp. + overheating | -40 °C to +125 °C |
| Body material | PA66-GF25 |
| Blade material | Zinc |
| Blade coating | Tin plated |
| Rivets material | Copper |
| Mounting screw | M8 |
| Tightening torque | 12±1 Nm |
| Vibration class compliant with | ISO 16750-3 Test IV |
| Compliant with | ISO 8820-5 (type SF 51) REACH, RoHS |

OVERALL DIMENSIONS



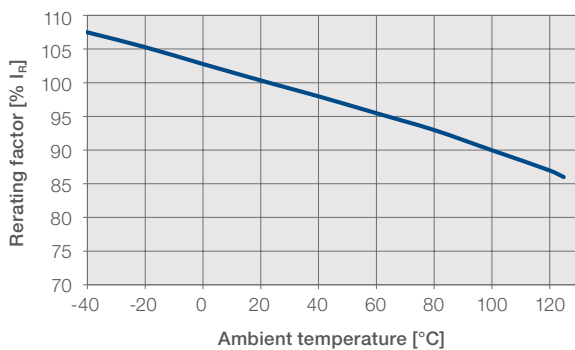
RATINGS

| Size [A] | Color coding | Expected voltage drop [mV] | ISO cable size [mm²] | I ² t* [A²s] | Average cold resistance** [mΩ] |
|----------|--------------|----------------------------|----------------------|-------------------------|--------------------------------|
| 100 | Yellow | 86 | 16 | 220000 | 0.6 |
| 125 | Green | 85 | 16 | 350000 | 0.4 |
| 150 | Orange | 93 | 25 | 463000 | 0.4 |
| 175 | White | 80 | 25 | 303000 | 0.3 |
| 200 | Blue | 81 | 35 | 416000 | 0.2 |
| 225 | Light brown | 100 | 35 | 296000 | 0.2 |
| 250 | Pink | 74 | 50 | 548000 | 0.2 |

*Calculated from breaking capacity test

**At ambient temperature = 23 ±1 °C

DERATING CURVE



MELTING TIME AND CURVE

Operating time limits:

| % I _R | Min [s] | Max [s] |
|------------------|---------|---------|
| 100 | 14400 | ∞ |
| 135 | 120 | 1800 |
| 200 | 1 | 15 |
| 350 | 0.3 | 5 |
| 600 | 0.1 | 1 |

Melting time graph at 23°C on test module ISO

