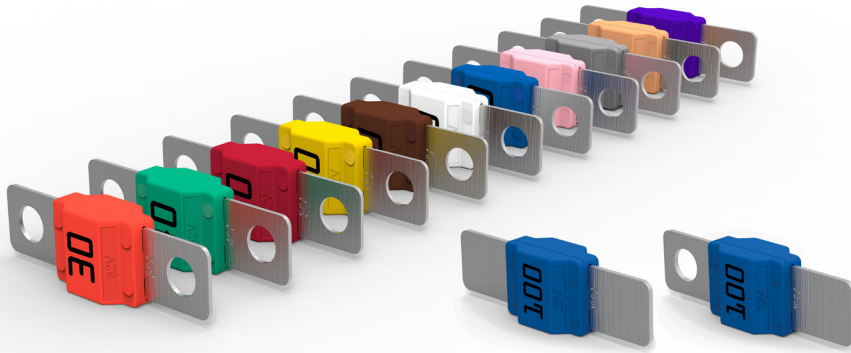


# COPPER MIDIVAL®

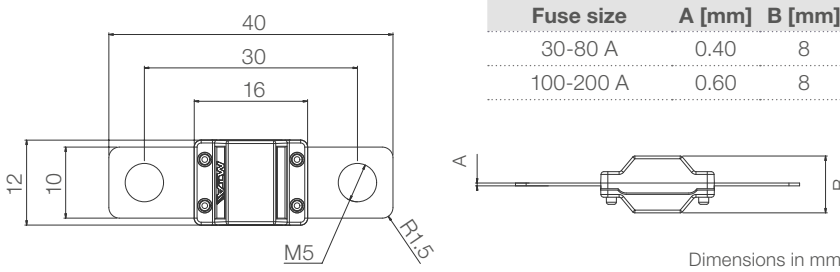


Clinched version available

## GENERAL DESCRIPTION

Breaking capacity	2000 A
Voltage rating	32 V
Ambient temp. + overheating	-40 °C to +125 °C
Body material	PA66-GF25
Blade material	Copper
Blade coating	Tin plated
Mounting screw	M5
Tightening torque	4.5±1 Nm
Vibration class compliant with	ISO 16750-3 Test IV
Compliant with	ISO 8820-5 (type SF 30) REACH, RoHS

## OVERALL DIMENSIONS



## MELTING TIME AND CURVE

Operating time limits:

% I <sub>n</sub>	30 to 125 A		150 to 200 A	
	Min [s]	Max [s]	Min [s]	Max [s]
75	-	-	360000	∞
100	360000	∞	-	-
110	14400	∞	-	-
150	90	3600	-	-
200	3	100	1	15
300	0.3	3	-	-
350	-	-	0.3	5
500	0.1	1	-	-
600	-	-	0.1	1

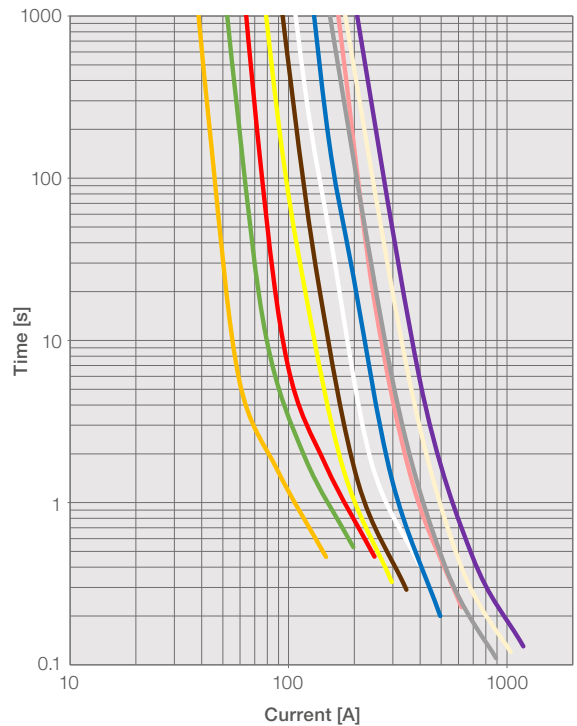
## RATINGS

Size [A]	Color coding	Expected voltage drop [mV]	ISO cable size [mm <sup>2</sup> ]	I <sup>2</sup> t* [A <sup>2</sup> s]	Average cold resistance** [mΩ]
30	Orange	75	2.5	4300	1.9
40	Green	77	4.0	6300	1.4
50	Red	55	6.0	9800	0.9
60	Yellow	59	6.0	16600	0.7
70	Brown	61	10.0	20800	0.7
80	White	53	10.0	31000	0.6
100	Blue	54	16.0	37500	0.4
125	Pink	52	25.0	69500	0.3
150	Grey	52	25.0	80000	0.4
175	Light Brown	55	25.0	116000	0.3
200	Violet	60	25.0	172000	0.3

\*Calculated from breaking capacity test

\*\*At ambient temperature = 23 ±1 °C

Melting time graph at 23°C on test module ISO



## DERATING CURVE

